

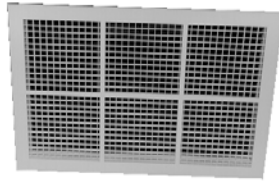
# PLASTIC DIFFUSERS AND GRILLES STREMLINE RANGE



360x540 - Tee bar Streamline adjustable and fixed blade diffuser



360x540 - Tee bar Eggcrate grille



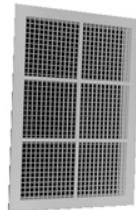
360x540 - neck adaptor



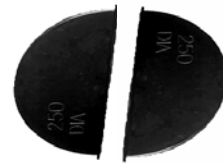
360x360 Streamline adjustable and fixed blade diffuser



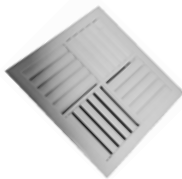
360x540 - Security relief grille



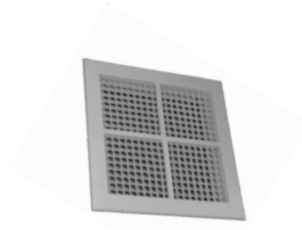
280x280 - butterfly damper neck adaptor



280x280 Streamline adjustable and fixed blade diffuser



360x360 Eggcrate grille



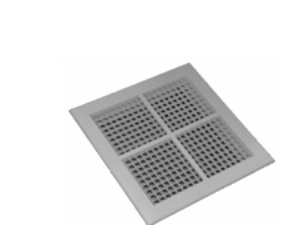
360x360 - neck adaptor



280x140 and 360x180 Streamline diffuser /wall register and adaptor. Adjustable and fixed blade



280x280 Eggcrate grille



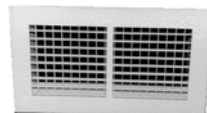
280x280 - neck adaptor



Typical diffuser and grille clips



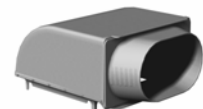
280x140 and 360x180 Eggcrate grille



280x280 - neck adaptor



280x280 - cushion head adaptor



# PLASTIC DIFFUSERS AND GRILLES STREMLINE - INSTALLATION, ADJUSTMENT AND CARE

AdvantageAir

## INSTALLATION

1. Mark out the hole in the ceiling as follows:

|       |               |
|-------|---------------|
| SL2WS | 295mm x 155mm |
| SL30  | 295mm x 295mm |
| SL2WL | 375mm x 195mm |
| SL40  | 375mm x 375mm |
| SL54  | 375mm x 555mm |
| SSRV  | 375mm x 555mm |

2. Cut out hole in ceiling

3. Remove the four biscuits from the grille frame and place to one side. Ensure the holes in the grille frame and neck adaptor line up and clip neck adaptor onto grille frame.

4. Hold grille/neck adaptor assembly in position in the hole in the ceiling and push plastic clips through holes on the side of the grille frame (see fig A).

5. Apply maximum pressure to the top of each clip to ensure the frame is pulled tightly up to the ceiling.

A screwdriver can be used to push the clip to its final position.

6. After the grille/neck adaptor frame is securely and satisfactorily positioned carefully install the four biscuits.

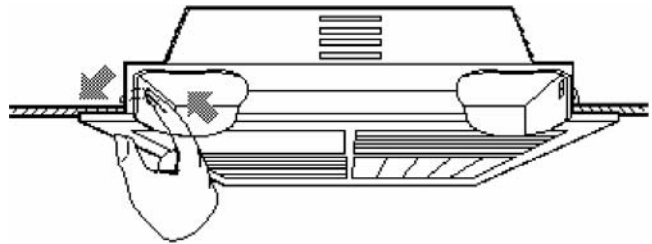


FIG. A

## ADJUSTMENT AND CARE

7. Rotate biscuits to suit required direction of throw as indicated in fig B.

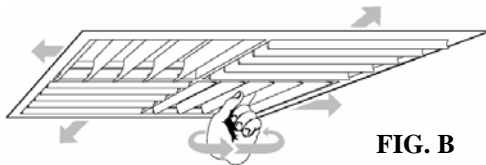


FIG. B

8. Ensure each biscuit is firmly clipped into grille frame by applying pressure on top or the biscuit frame as indicated in fig C.

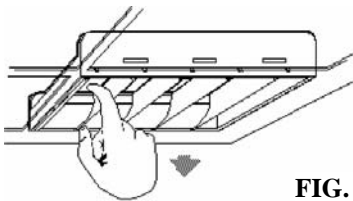


FIG. C

9. Click blades into required position as indicated in fig D.

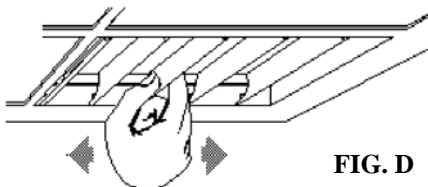


FIG. D

10. For total shut off (if required) use a bent paper clip on the last blade in each biscuit to pull the blades into their fully close position as indicated in fig E. Pull the paper clip out through the gap between the last blade and the biscuit frame.

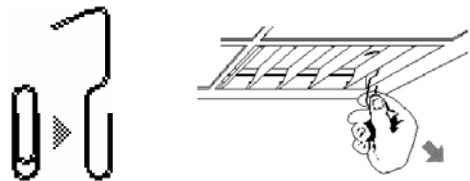


FIG. E

11. To open a shut off diffuser after winter place a broad blade knife between the diffuser blades as indicated in fig F. Set to the required position as indicated under item 9.

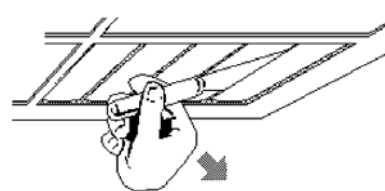


FIG. F

12. To clean grilles remove cores and wash in warm soapy water. Wipe down frame. Do NOT place cores in dishwasher.

13. Please recycle all packaging



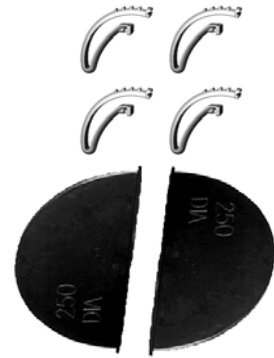
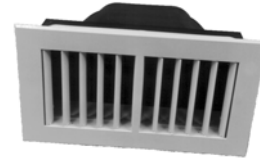
### No liability

Make sure you read and understand all the installation instructions before you install this Linear Elite diffuser. Advantage Air (Aust) Pty Ltd does not accept any responsibility for any loss or damage that may be caused either directly or indirectly by the installation of this Linear Elite diffuser.

# PLASTIC DIFFUSERS AND GRILLES

## STREEMLINE - ADJUSTABLE BLADE DIFFUSER KITS

AdvantageAir



### FEATURES

- Louvred biscuits can be adjusted to seven optimum set points using the patented locking system.
- Diffusers are quick and easy to install.
- Louvre blades remain flush with the ceiling at all times with no ugly protrusions below the ceiling.
- Aerofoil blade profile reduces air noise at the grille and improves air diffusion.
- Each biscuit can be located to blow in any one of four directions.
- The louvre biscuits can be removed and washed.
- The SL54 are designed to fit in a standard commercial "T bar" ceiling grid.
- When the blades are closed they provide a good seal against winter drafts.

### CONSTRUCTION

- The diffuser is manufactured from white ABS plastic.
- Plastic neck adaptors are manufactured from black ABS plastic.
- The diffuser clips are constructed from Acetal plastic.

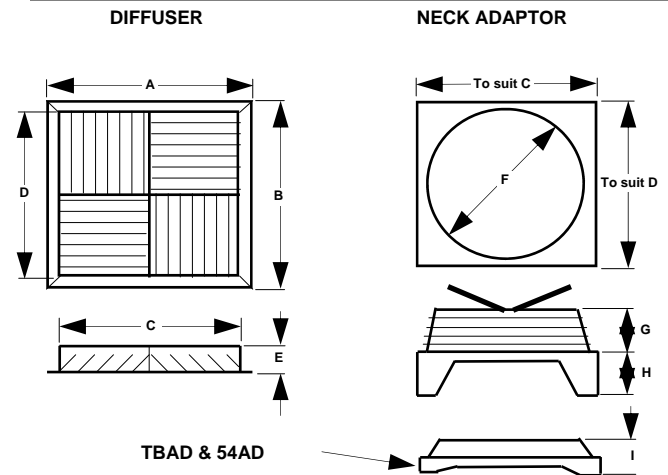
### APPLICATIONS

- Ideal for residential and commercial evaporative cooling, refrigerated air conditioning, heating and ventilation applications.

### OPTIONAL EXTRAS

- Butterfly dampers are priced separately and must be specified at the time of ordering. Butterfly dampers can only be supplied on model numbers indicated with an asterisk (\*).
- Cushion head adaptors can be fitted to SL 30 and SL 40 Streamline diffusers

### DIMENSIONS



| KIT MODEL NO. | A O/all mm | B O/all mm | C Neck mm | D Neck mm | E mm | F Dia mm | G mm | H mm | I mm |
|---------------|------------|------------|-----------|-----------|------|----------|------|------|------|
| SL2WS15*      | 334        | 195        | 280       | 141       | 75   | 150      | 160  | 32   | na   |
| SL2WS20*      | 334        | 195        | 280       | 141       | 75   | 200      | 80   | 32   | na   |
| SL3020*       | 334        | 334        | 280       | 280       | 60   | 200      | 80   | 32   | na   |
| SL3025*       | 334        | 334        | 280       | 280       | 60   | 250      | 80   | 32   | na   |
| SL3030*       | 334        | 334        | 280       | 280       | 60   | 300      | 80   | 32   | na   |
| SL2WL20       | 416        | 237        | 365       | 185       | 60   | 200      | 83   | 118  | na   |
| SL2WL25       | 416        | 237        | 365       | 185       | 60   | 250      | 83   | 118  | na   |
| SL2WL30       | 416        | 237        | 365       | 185       | 60   | 300      | 83   | 118  | na   |

| KIT MODEL NO. | A O/all mm | B O/all mm | C Neck mm | D Neck mm | E mm | F Dia mm | G mm | H mm | I mm |
|---------------|------------|------------|-----------|-----------|------|----------|------|------|------|
| SL4020*       | 416        | 416        | 360       | 360       | 60   | 200      | 80   | 32   | 97   |
| SL4025*       | 416        | 416        | 360       | 360       | 60   | 250      | 80   | 32   | 97   |
| SL4030*       | 416        | 416        | 360       | 360       | 60   | 300      | 80   | 32   | 97   |
| SL4030        | 416        | 416        | 360       | 360       | 60   | 300      | 60   | 60   | na   |
| SL4035        | 416        | 416        | 360       | 360       | 60   | 350      | 60   | 60   | na   |
| SL4040        | 416        | 416        | 360       | 360       | 60   | 400      | 60   | 60   | na   |
| SL5440        | 596        | 416        | 540       | 360       | 60   | 400      | 100  | 16   | 75   |
| SL5445        | 596        | 416        | 540       | 360       | 60   | 450      | 100  | 16   | na   |
| SL5450        | 596        | 416        | 540       | 360       | 60   | 500      | 100  | 16   | na   |

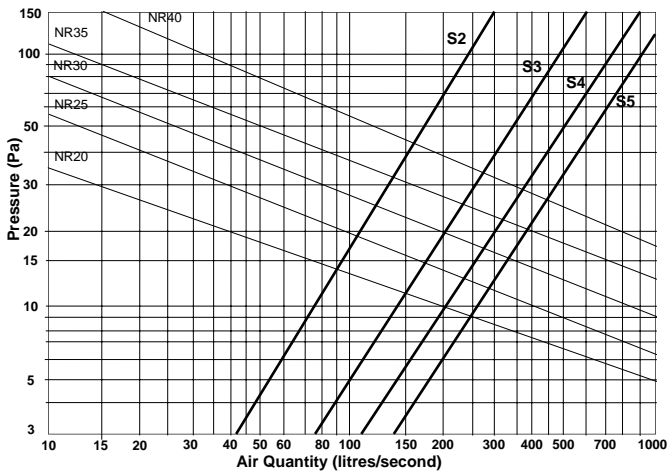
# PLASTIC DIFFUSERS AND GRILLES

## STREMLINE - ADJUSTABLE BLADE DIFFUSER

### PERFORMANCE CHARACTERISTICS

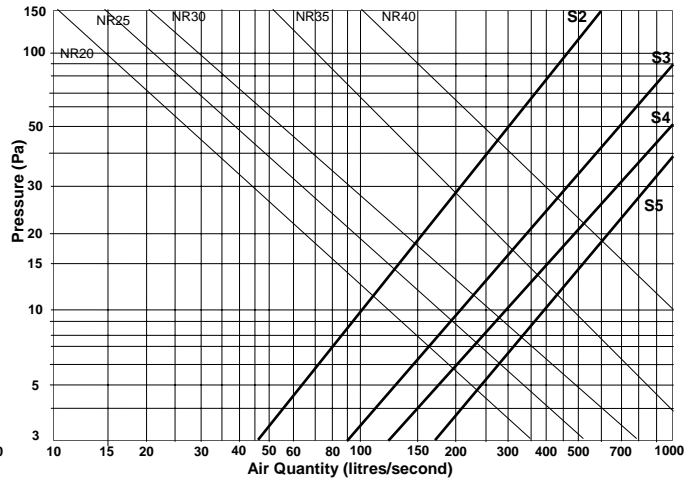
AdvantageAir

**SL-40** (360x360 Streamline diffuser - 4 way blow)



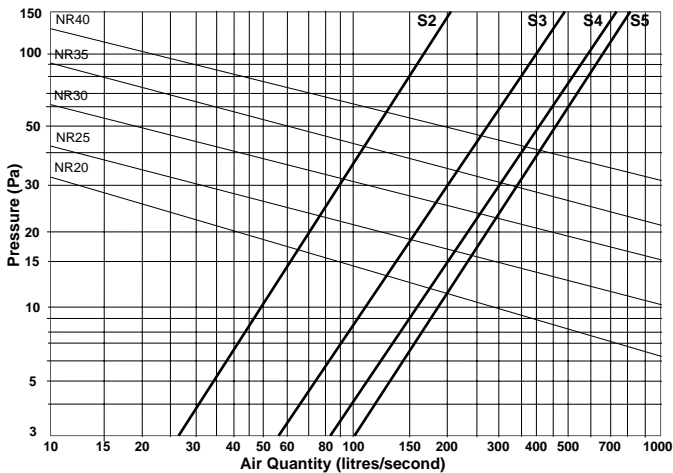
Throws vary between 1 to 5 meters up to 120 l/s and +5 meters for all air quantities above 120 l/s.

**SL-54** (360x540 Streamline diffuser - 4 way blow)



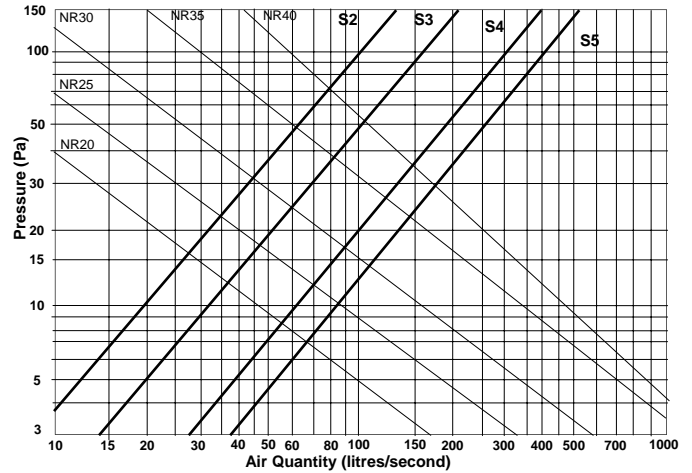
Throws vary between 1 to 5 meters up to 330 l/s and +5 meters for all air quantities above 330 l/s.

**SL-30** (280x280 Streamline diffuser - 4 way blow)



Throws vary between 1 to 5 meters up to 200 l/s and +5 meters for all air quantities above 200 l/s.

**SL-2WS** (280x140 Streamline diffuser - 2 way blow)



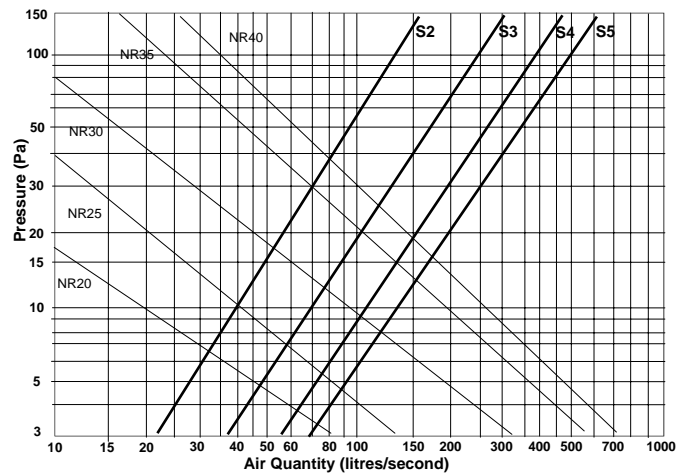
Throws vary between 1 to 5 meters up to 95 l/s and +5 meters for all air quantities above 95 l/s.

#### LEGEND

- S5** - Blade setting 5
- S4** - Blade setting 4
- S3** - Blade setting 3
- S2** - Blade setting 2
- S1** - Blade fully closed

**NR** - Noise Rating

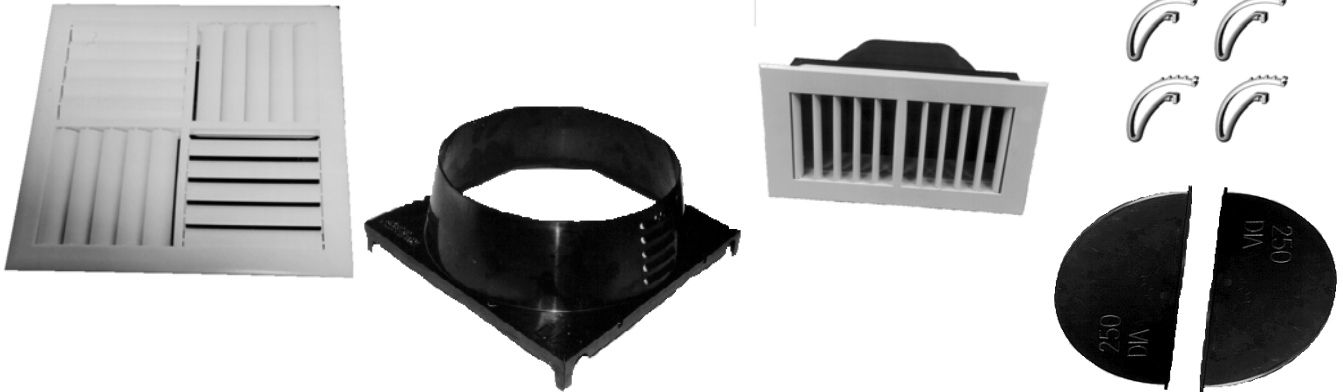
**SL-2WL** (360x180 Streamline diffuser - 2 way blow)



# PLASTIC DIFFUSERS AND GRILLES

## STREEMLINE - FIXED BLADE DIFFUSER KITS

AdvantageAir



### FEATURES

- Louvred biscuits are moulded in one piece and the pitch of the blades is fixed.
- Diffusers are quick and easy to install.
- Louvre blades remain flush with the ceiling at all times with no ugly protrusions below the ceiling.
- Aerofoil blade profile reduces air noise at the grille and improves air diffusion.
- Each biscuit can be located to blow in any one of four directions.
- The louvre biscuits can be removed and washed.
- The SL54 are designed to fit in a standard commercial "T bar" ceiling grid.
- Fixed blade Streamline diffusers are less expensive than adjustable blade diffusers.

### OPTIONAL EXTRAS

- Butterfly dampers are priced separately and must be specified at the time of ordering. Butterfly dampers can only be supplied on model numbers indicated with an asterisk (\*).
- Cushion head adaptors can be fitted to SL 30 and SL 40 Streamline diffusers

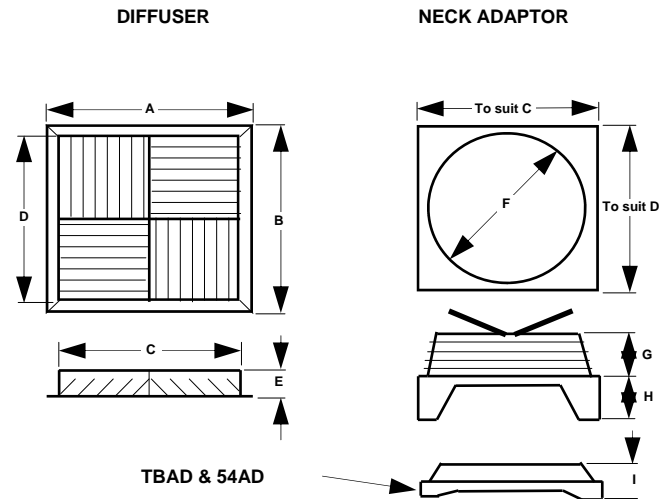
### CONSTRUCTION

- The diffuser is manufactured from white ABS plastic.
- Plastic neck adaptors are manufactured from black ABS plastic.
- The diffuser clips are constructed from Acetal plastic.

### APPLICATIONS

- Ideal for residential and commercial refrigerated air conditioning and ventilation applications.

### DIMENSIONS



| KIT MODEL NO. | A O/all mm | B O/all mm | C Neck mm | D Neck mm | E mm | F Dia mm | G mm | H mm | I mm |
|---------------|------------|------------|-----------|-----------|------|----------|------|------|------|
| SLF2WS15*     | 334        | 195        | 280       | 141       | 75   | 150      | 160  | 32   | na   |
| SLF2WS20*     | 334        | 195        | 280       | 141       | 75   | 200      | 80   | 32   | na   |
| SLF3020*      | 334        | 334        | 280       | 280       | 60   | 200      | 80   | 32   | na   |
| SLF3025*      | 334        | 334        | 280       | 280       | 60   | 250      | 80   | 32   | na   |
| SLF3030*      | 334        | 334        | 280       | 280       | 60   | 300      | 80   | 32   | na   |
| SLF2WL20      | 416        | 237        | 365       | 185       | 60   | 200      | 83   | 118  | na   |
| SLF2WL25      | 416        | 237        | 365       | 185       | 60   | 250      | 83   | 118  | na   |
| SLF2WL30      | 416        | 237        | 365       | 185       | 60   | 300      | 83   | 118  | na   |

| KIT MODEL NO. | A O/all mm | B O/all mm | C Neck mm | D Neck mm | E mm | F Dia mm | G mm | H mm | I mm |
|---------------|------------|------------|-----------|-----------|------|----------|------|------|------|
| SLF4020*      | 416        | 416        | 360       | 360       | 60   | 200      | 80   | 32   | 97   |
| SLF4025*      | 416        | 416        | 360       | 360       | 60   | 250      | 80   | 32   | 97   |
| SLF4030*      | 416        | 416        | 360       | 360       | 60   | 300      | 80   | 32   | 97   |
| SLF4030       | 416        | 416        | 360       | 360       | 60   | 300      | 60   | 60   | na   |
| SLF4035       | 416        | 416        | 360       | 360       | 60   | 350      | 60   | 60   | na   |
| SLF4040       | 416        | 416        | 360       | 360       | 60   | 400      | 60   | 60   | na   |
| SLF5440       | 596        | 416        | 540       | 360       | 60   | 400      | 100  | 16   | 75   |
| SLF5445       | 596        | 416        | 540       | 360       | 60   | 450      | 100  | 16   | na   |
| SLF5450       | 596        | 416        | 540       | 360       | 60   | 500      | 100  | 16   | na   |

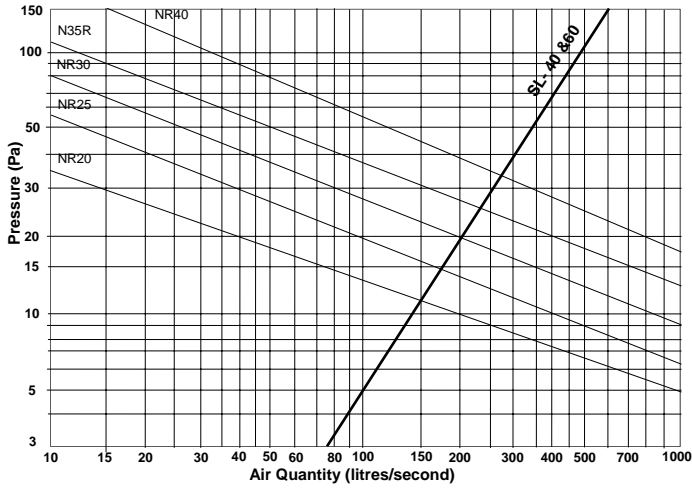
# PLASTIC DIFFUSERS AND GRILLES

## STREMLINE - FIXED BLADE DIFFUSER

### PERFORMANCE CHARACTERISTICS

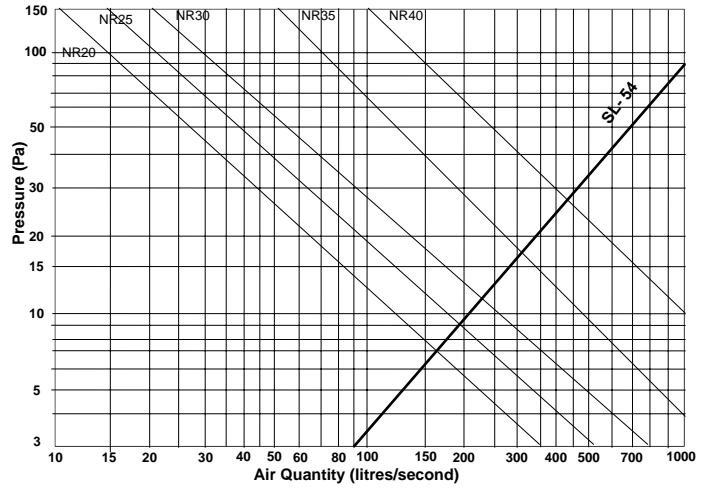
AdvantageAir

**SL-40** (360x360 Streamline diffuser - 4 way blow)



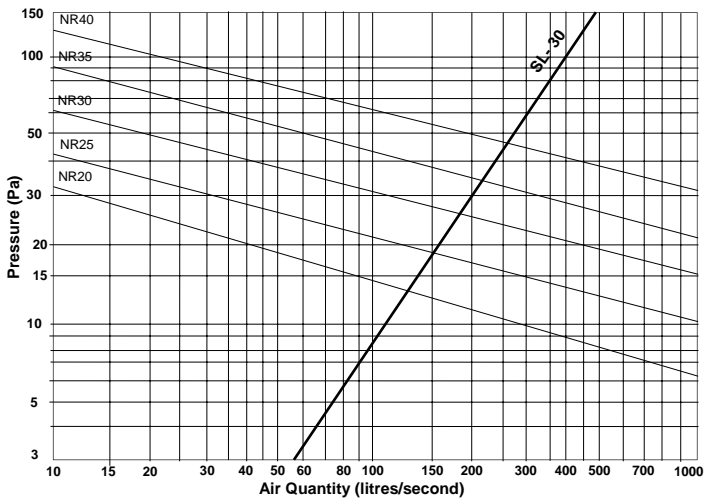
Throws vary between 1 to 5 meters up to 200 l/s and +5 meters for all air quantities above 200 l/s.

**SL-54** (360x540 Streamline diffuser - 4 way blow)



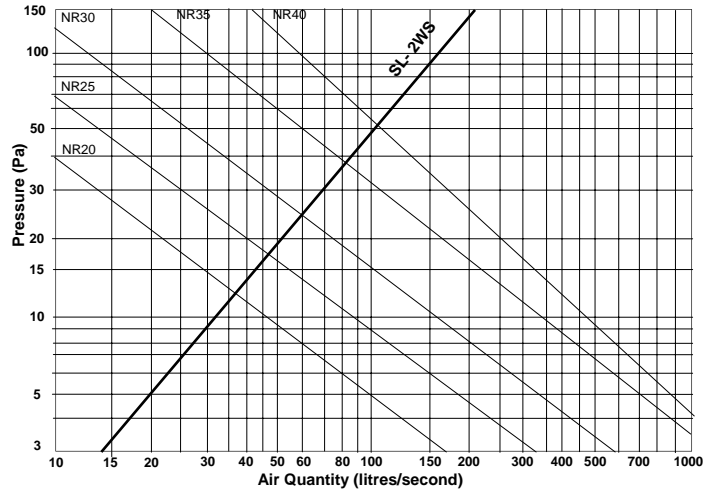
Throws vary between 1 to 5 meters up to 330 l/s and +5 meters for all air quantities above 330 l/s.

**SL-30** (280x280 Streamline diffuser - 4 way blow)



Throws vary between 1 to 5 meters up to 120 l/s and +5 meters for all air quantities above 120 l/s.

**SL-2WS** (280x140 Streamline diffuser - 2 way blow)

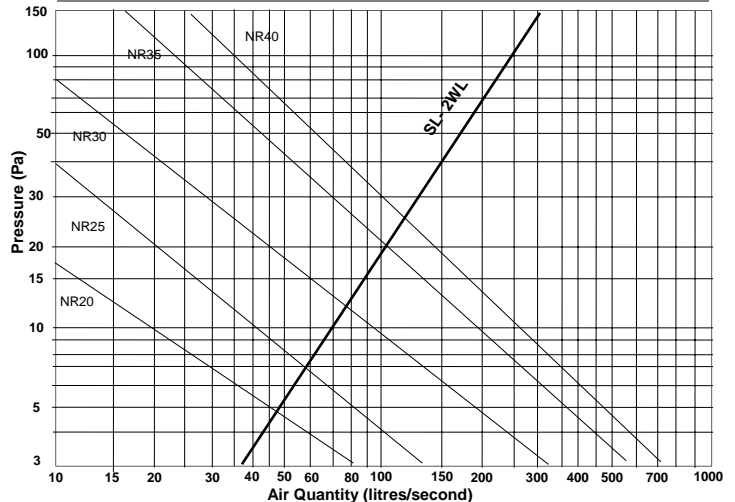


Throws vary between 1 to 5 meters up to 95 l/s and +5 meters for all air quantities above 95 l/s.

#### LEGEND

NR - Noise Rating

**SL-2WL** (360x180 Streamline diffuser - 2 way blow)

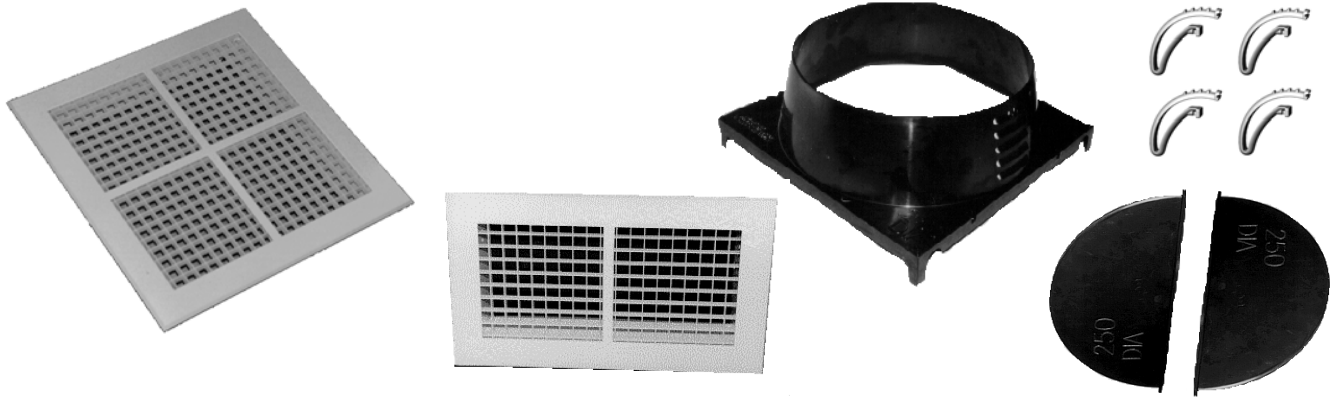


Throws vary between 1 to 5 meters up to 95 l/s and +5 meters for all air quantities above 95 l/s.



# PLASTIC DIFFUSERS AND GRILLES STREMLINE - EGGCRATE GRILLE KITS

AdvantageAir



## FEATURES

- Eggcrate biscuits are moulded in one piece.
- Grilles are quick and easy to install.
- The eggcrate biscuits can be removed and washed.
- The SL60 & SL54 are designed to fit in a standard commercial "T bar" ceiling grid.
- Fixed blade Streamline Eggcrate grilles are less expensive than aluminum eggcrate grilles and easier to remove and clean.

## OPTIONAL EXTRAS

- Butterfly dampers are priced separately and must be specified at the time of ordering. Butterfly dampers can only be supplied on model numbers indicated with an asterisk (\*).
- Cushion head adaptors can be fitted to SL 30 and SL 40 Streamline diffusers

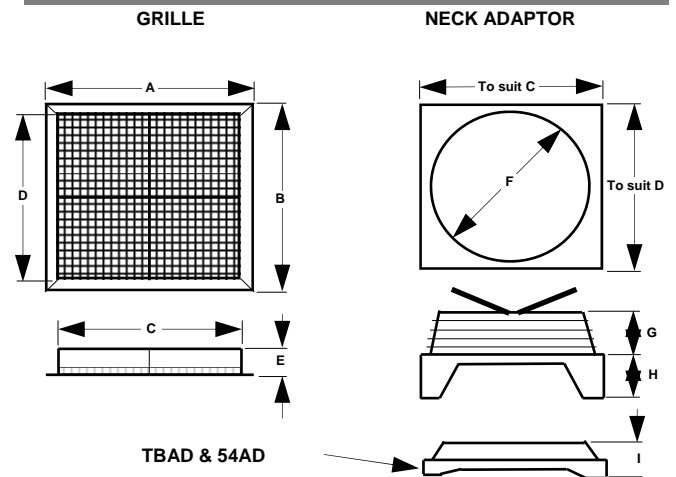
## CONSTRUCTION

- The grille is manufactured from white ABS plastic.
- Plastic neck adaptors are manufactured from black ABS plastic.
- The grille clips are constructed from Acetal plastic.

## APPLICATIONS

- Ideal for residential and commercial exhaust and ventilation applications.

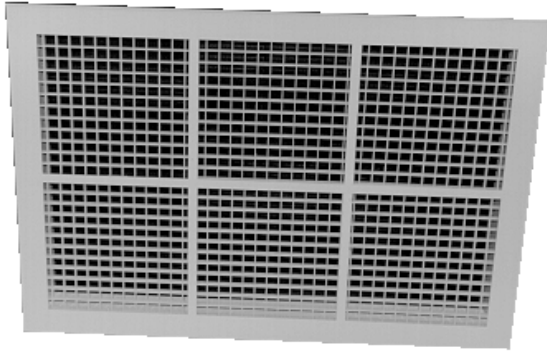
## DIMENSIONS



| KIT MODEL NO. | A O/all mm | B O/all mm | C Neck mm | D Neck mm | E mm | F Dia mm | G mm | H mm | I mm |
|---------------|------------|------------|-----------|-----------|------|----------|------|------|------|
| SLE2WS15*     | 334        | 195        | 280       | 141       | 75   | 150      | 160  | 32   | na   |
| SLE2WS20*     | 334        | 195        | 280       | 141       | 75   | 200      | 80   | 32   | na   |
| SLE3020*      | 334        | 334        | 280       | 280       | 60   | 200      | 80   | 32   | na   |
| SLE3025*      | 334        | 334        | 280       | 280       | 60   | 250      | 80   | 32   | na   |
| SLE3030*      | 334        | 334        | 280       | 280       | 60   | 300      | 80   | 32   | na   |
| SLE2WL20      | 416        | 237        | 365       | 185       | 60   | 200      | 83   | 118  | na   |
| SLE2WL25      | 416        | 237        | 365       | 185       | 60   | 250      | 83   | 118  | na   |
| SL2EWL30      | 416        | 237        | 365       | 185       | 60   | 300      | 83   | 118  | na   |

| KIT MODEL NO. | A O/all mm | B O/all mm | C Neck mm | D Neck mm | E mm | F Dia mm | G mm | H mm | I mm |
|---------------|------------|------------|-----------|-----------|------|----------|------|------|------|
| SLE4020*      | 416        | 416        | 360       | 360       | 60   | 200      | 80   | 32   | 97   |
| SLE4025*      | 416        | 416        | 360       | 360       | 60   | 250      | 80   | 32   | 97   |
| SLE4030*      | 416        | 416        | 360       | 360       | 60   | 300      | 80   | 32   | 97   |
| SLE4030       | 416        | 416        | 360       | 360       | 60   | 300      | 60   | 60   | na   |
| SLE4035       | 416        | 416        | 360       | 360       | 60   | 350      | 60   | 60   | na   |
| SLE4040       | 416        | 416        | 360       | 360       | 60   | 400      | 60   | 60   | na   |
| SLE5440       | 596        | 416        | 540       | 360       | 60   | 400      | 100  | 16   | 75   |
| SLE5445       | 596        | 416        | 540       | 360       | 60   | 450      | 100  | 16   | na   |
| SLE5450       | 596        | 416        | 540       | 360       | 60   | 500      | 100  | 16   | na   |

# PLASTIC DIFFUSERS AND GRILLES STREMLINE SECURITY RELIEF VENTS



## FEATURES

- Rectangular grille with six removable eggcrate cores and a vision proof barometric damper behind the grille.
- The barometric damper will open if the pressure on the room side of the grille is greater than the pressure in the ceiling void.
- Supplied with a separate metal stop to prevent the damper from blowing open.
- Fitted with rubber seals to prevent noise when damper closes.

## CONSTRUCTION

- These relief vents are constructed from white plastic and have a black, fluted, plastic barometric damper behind.

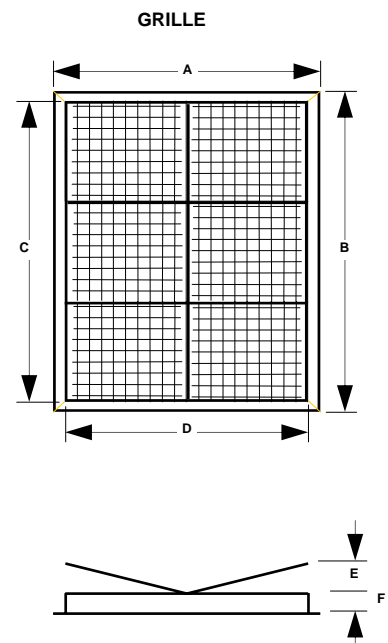
## PERFORMANCE

- Air flow through the grille will be determined by the pressure in the room and room leakage. Maximum air flow through a single grille should not exceed 390 l/s if air noise through the grille is to be avoided.

## APPLICATIONS

- Security relief vents are designed to be installed in the ceiling of residences which are evaporatively cooled. Installation of these grilles provides a relief path for the evaporative system and eliminates the need to open windows and doors.

## DIMENSIONS



| MODEL NO. | A<br>O/all<br>mm | B<br>O/all<br>mm | C<br>Neck<br>mm | D<br>Neck<br>mm | E<br>Open<br>mm | F<br>mm |
|-----------|------------------|------------------|-----------------|-----------------|-----------------|---------|
| SSRV      | 416              | 596              | 540             | 360             | 150             | 60      |



# PLASTIC DIFFUSERS AND GRILLES PLASTIC CUSHION HEAD

AdvantageAir



## FEATURES

- Low cost
- Lightweight rigid construction
- Provides even airflow across entire diffuser face
- Suitable for restricted ceiling voids
- Curved design allows easy ceiling installation
- Internal insulation reduces risk of condensation and provides excellent acoustic properties
- Integral hanging points

## OPTIONAL EXTRAS

- Can be internally insulated with a 'closed cell' polyethylene adhesive material or a 25mm (black scrim or perforated foil) fibreglass
- Manual or Motorised inlet damper

## CONSTRUCTION

- Constructed from ABS blended engineering plastics

## APPLICATIONS

- Suitable for use on:
  - streamline diffusers
  - silhouette diffusers
  - Spigot sizes available 200/250/300 diameter

## DIMENSIONS

